



SUPPLEMENTARY REGULATIONS

BMU European SuperMoto Championship 2023

Round1& 2

27.05.2023 & 28.05.2023

Venue: City of DRAMA - GREECE

1. ORGANIZERS

A.MOT.O.E.

2. CLASSES

SM65

SM85

S3

OPEN

3. ACCESS

See attached map

Nearest city: Drama, at 8.0km. from the circuit,

GPS coordinates of the circuit: 41°10'13.2"N 24°12'09.9"E

4. CIRCUIT INFORMATION

Name:69 Speedway – Kallifitos - Drama

length: 1200m ./ asphalt: 1070m (89%) offroad: approximately 130m (11%)

width: . / asphalt: 9m offroad: 8m

homologationtype

5. NEAREST HOSPITAL

Name: General Hospital of Drama

Approximate distance from venue: 8.0 Km



6. OFFICIALS

BMU Steward:	TBA
Race Director:	TBA
Clerk of the Course:	TBA
Chief Technical Steward:	TBA
Administrative control:	TBA
Paddock Official:	TBA
Timekeeper:	AMOTOE TIMING
CMO:	INTERSALONICA
Chief Flagmarshal:	TBA

7. MEETINGS OF THE RACE DIRECTION

Saturday	20:00
Sunday	17:30

Venue: Race Direction Office

8. ADMINISTRATIVE AND TECHNICAL CONTROL

Friday	17:00 – 20:00
Saturday	08:00 – 09:00
Sunday	08:00 – 09:00

9. INSURANCE, ENTRIES AND STARTING PERMISSIONS

All riders must be authorized by their national federation (FMN) in order to participate in the event(s) via starting permission plus license confirmation (to be presented at the administrative control).

All entries must be sent minimum 2 days before the beginning of the Administrative control.

All riders will be required to sign additional documents at the Administrative control.

Riders under the age of 18 (minors) must be accompanied by a legal representative (parent or guardian) at the technical and Administrative control.

By signing and stamping the Starting permission for a rider, their FMN declares that the rider in question:

- has a valid insurance for motorcycling sports according to FIM Europe requirements,
- has no bans or prohibitions that prevent them to participate in the event,
- is physically and mentally fit to participate in the event,
- has the sporting skills of the required level in order to participate in the event without endangering him or other participants during the event

The organizers disclaim all responsibility for damage to a motorcycle, its accessories and components arising out of an accident, fire or other cases.

The organizers have contracted a third party insurance according the BMU regulations for the day of the event (Sunday) for the amount of **200 000** euro.

All Starting permissions must be sent to

Email: secretary@amotoe.gr +30 6972920809

10. ENTRY FEE



50 euro per rider and per day for S3 and OPEN (sum 100 euros), 30 euro per rider and per day for SM65 and SM85 (sum 60 euros)

11. FREE PRACTICES, TIME PRACTICES AND RACES

Free practices, Timed Practices and Races will be run according to the timetable enclosed.

In the days before the race you can use the circuit for practice after contacting the circuit owner on the phone+30 6933010525

12. RENUNCIATION OF ANY RECOURSE AGAINST SPORTING AUTHORITIES

Riders renounce all rights of appeal against the organizer, his representatives or agents by arbitration or before a tribunal or any other manner not foreseen by the BMU Regulations or the FIM Europe Sporting Code where applicable, for any damages for which they could be liable in consequence of all acts or omissions on the part of the organizer, his officials, representatives or agents in the application of these regulations or contributed to or arising out of their actions.

SPECIFIC AND ADDITIONAL REGULATIONS FOR THE EVENT:

Place and date: Kavalas
Approved by Organizer: Tsesmeli Maria
Approved by Race Director:
Approved by BMU:

Enclosed:

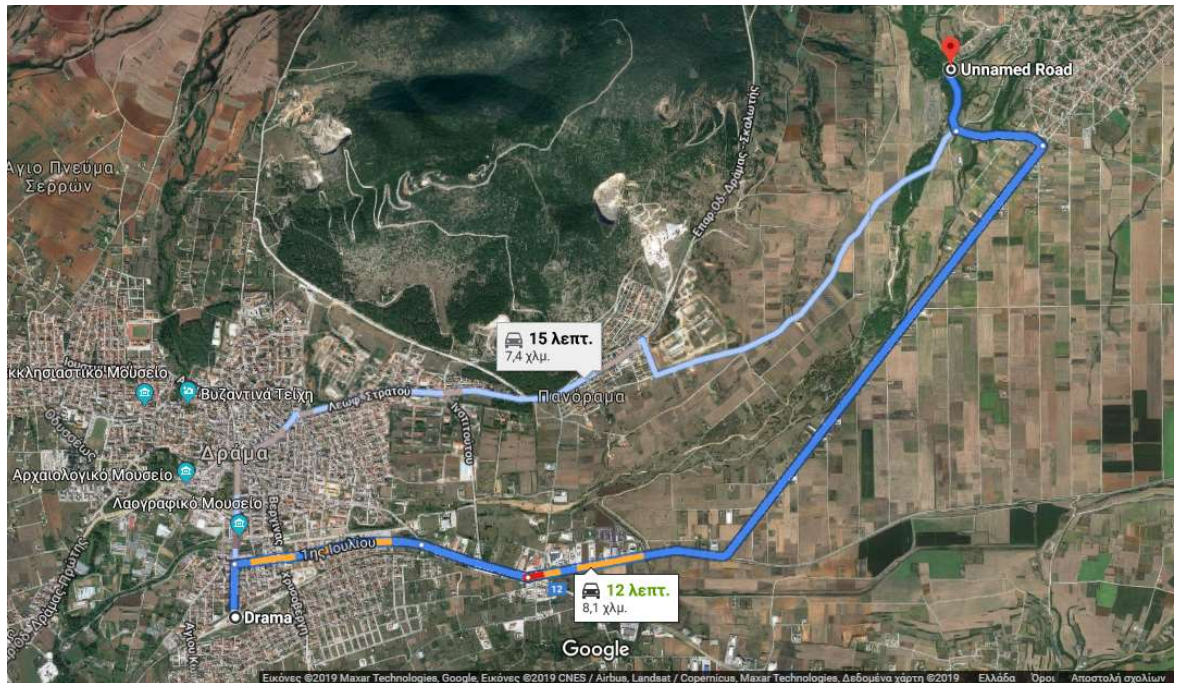
Map of the circuit
Access Map
Timetable



CIRCUIT LAYOUT / CIRCUIT FACILITIES



ACCESS MAPS





TIMETABLE

BMU EUROPEAN SUPERMOTO CHAMPIONSHIP

ROUND 1 & 2

GRAND PRIX of GREECE 2023

CIRCUIT , CITY OF DRAMA

27.05.2023 & 28.05.2023

FRIDAY 26.05.2023		
17:00 - 20:00	ALL	ADMINISTRATIVE AND TECHNICAL CONTROL
20:00		ORG AND JURY MEETING
SATURDAY 27.05.2023		
08:00 - 9:00	ALL	ADMINISTRATIVE AND TECHNICAL CONTROL
9:00	ALL	RIDERS BRIEFING
09:20 - 09:35	SM JUNIOR	FREE PRACTICE 1
09:40 - 10:00	S3/OPEN	FREE PRACTICE 1
10:30 - 10:45	SM JUNIOR	FREE PRACTICE 2
10:50 - 11:10	S3/OPEN	FREE PRACTICE 2
12:00 - 12:15	SM JUNIOR	TIME PRACTICE
12:20 - 12:40	S3/OPEN	TIME PRACTICE
13:30	SM JUNIOR	ACCESS FROM PADDOCK TO GRID OPENS
13:38	SM JUNIOR	START OF WARM UP LAP
13:40	SM JUNIOR	RACE 1 (X LAPS = APP. 15 MIN.)
14:00	S3/OPEN	ACCESS FROM PADDOCK TO GRID OPENS
14:08	S3/OPEN	START OF WARM UP LAP
14:10	S3/OPEN	RACE 1 (X LAPS = APP. 20 MIN.)
15:10	SM JUNIOR	ACCESS FROM PADDOCK TO GRID OPENS
15:18	SM JUNIOR	START OF WARM UP LAP
15:20	SM JUNIOR	RACE 2 (X LAPS = APP. 15 MIN.)
	SM JUNIOR	PRIZE GIVING CEREMONY
15:50	S3/OPEN	ACCESS FROM PADDOCK TO GRID OPENS
15:58	S3/OPEN	START OF WARM UP LAP
16:00	S3/OPEN	RACE 2 (X LAPS = APP. 20 MIN.)
	S3/OPEN	PRIZE GIVING CEREMONY
SUNDAY 28.05.2023		
08:00 - 9:00	ALL	ADMINISTRATIVE AND TECHNICAL CONTROL



9:00	ALL	RIDERS BRIEFING
09:20 - 09:35	SM	FREE PRACTICE 1
09:40 - 10:00	JUNIOR	FREE PRACTICE 1
	S3/OPEN	FREE PRACTICE 1
10:30 - 10:45	SM	FREE PRACTICE 2
10:50 - 11:10	JUNIOR	FREE PRACTICE 2
	S3/OPEN	FREE PRACTICE 2
12:00 - 12:15	SM	TIME PRACTICE
12:20 - 12:40	JUNIOR	TIME PRACTICE
	S3/OPEN	TIME PRACTICE
13:30	SM	ACCESS FROM PADDOCK TO GRID OPENS
	JUNIOR	ACCESS FROM PADDOCK TO GRID OPENS
13:38	SM	START OF WARM UP LAP
	JUNIOR	START OF WARM UP LAP
13:40	SM	RACE 1 (X LAPS = APP. 15 MIN.)
	JUNIOR	RACE 1 (X LAPS = APP. 15 MIN.)
14:00	S3/OPEN	ACCESS FROM PADDOCK TO GRID OPENS
14:08	S3/OPEN	START OF WARM UP LAP
14:10	S3/OPEN	RACE 1 (X LAPS = APP. 20 MIN.)
15:10	SM	ACCESS FROM PADDOCK TO GRID OPENS
	JUNIOR	ACCESS FROM PADDOCK TO GRID OPENS
15:18	SM	START OF WARM UP LAP
	JUNIOR	START OF WARM UP LAP
15:20	SM	RACE 2 (X LAPS = APP. 15 MIN.)
	JUNIOR	RACE 2 (X LAPS = APP. 15 MIN.)
	SM	PRIZE GIVING CEREMONY
	JUNIOR	PRIZE GIVING CEREMONY
15:50	S3/OPEN	ACCESS FROM PADDOCK TO GRID OPENS
15:58	S3/OPEN	START OF WARM UP LAP
16:00	S3/OPEN	RACE 2 (X LAPS = APP. 20 MIN.)
	S3/OPEN	PRIZE GIVING CEREMONY

For AMOTOE

President



Tsesmeli Maria