



ПРОГРАМА / TIMETABLE
EC SUPERMOTO AND BC ROAD RACING
GRAND PRIX BULGARIA 2020
12-13.09.2020

B2

ПЕТЪК / FRIDAY				
15:00 - 19:00	ALL	ТЕХНИЧЕСКИ КОНТРОЛ И РЕГИСТРАЦИЯ		TECHNICAL CONTROL AND VERIFICATION
СЪБОТА / SATURDAY				
07:30 - 08:30		ТЕХНИЧЕСКИ КОНТРОЛ И РЕГИСТРАЦИЯ		TECHNICAL CONTROL AND VERIFICATION
8:35		БРИФИНГ СУПЕРМОТО		RIDERS BRIEFING SUPERMOTO
09:15 - 09:30	SM65+SM85	СВОБОДНА ТРЕНИРОВКА	15	FREE PRACTICE
09:35 - 09:55	OPEN + S3	СВОБОДНА ТРЕНИРОВКА	20	FREE PRACTICE
10:05 - 10:20	SP 125/SSP300	СВОБОДНА ТРЕНИРОВКА	15	FREE PRACTICE
10:20 - 10:25	F600	СВОБОДНА ТРЕНИРОВКА	15	FREE PRACTICE
10:30 - 10:45	F1000	СВОБОДНА ТРЕНИРОВКА	15	FREE PRACTICE
10:50 - 11:10	SSP+SBK	СВОБОДНА ТРЕНИРОВКА	15	FREE PRACTICE
11:20 - 11:35	SM65+SM85	ТРЕНИРОВКА ЗА ВРЕМЕ	15	TIME PRACTICE
11:40 - 12:00	OPEN + S3	ТРЕНИРОВКА ЗА ВРЕМЕ	20	TIME PRACTICE
12:00 - 12:45		ПАУЗА		
12:45 - 13:00	SP 125/SSP300	ТРЕНИРОВКА ЗА ВРЕМЕ 1	15	TIME PRACTICE 1
13:05 - 13:25	F600	ТРЕНИРОВКА ЗА ВРЕМЕ 1	20	TIME PRACTICE 1
13:30 - 13:50	F1000	ТРЕНИРОВКА ЗА ВРЕМЕ 1	20	TIME PRACTICE 1
13:55 - 14:15	SSP+SBK	ТРЕНИРОВКА ЗА ВРЕМЕ 1	20	TIME PRACTICE 1
14:25	SM65+SM85	ДОСТЪПЪТ ДО СТАРТОВАТА РЕШЕТКА Е ОТВОРЕН		ACCESS TO GRID OPENS
14:30	SM65+SM85	ДОСТЪПЪТ ДО СТАРТОВАТА РЕШЕТКА Е ЗАТВОРЕН		ACCESS TO GRID CLOSES
14:32	SM65+SM85	НАЧАЛО НА 1 WARM UP ОБИКолКА		START OF 1 WARM UP LAP
14:35 - 14:50	SM65+SM85	МАНШ 1	8L	RACE 1
14:55	OPEN + S3	ДОСТЪПЪТ ДО СТАРТОВАТА РЕШЕТКА Е ОТВОРЕН		ACCESS TO GRID OPENS
15:00	OPEN + S3	ДОСТЪПЪТ ДО СТАРТОВАТА РЕШЕТКА Е ЗАТВОРЕН		ACCESS TO GRID CLOSES
15:02	OPEN + S3	НАЧАЛО НА 1 WARM UP ОБИКолКА		START OF 1 WARM UP LAP
15:05 - 15:25	OPEN + S3	МАНШ 1	12L	RACE 1
15:35 - 15:50	SP 125/SSP300	ТРЕНИРОВКА ЗА ВРЕМЕ 2	15	TIME PRACTICE 2
15:55 - 16:10	F600	ТРЕНИРОВКА ЗА ВРЕМЕ 2	15	TIME PRACTICE 2
16:15 - 16:30	F1000	ТРЕНИРОВКА ЗА ВРЕМЕ 2	15	TIME PRACTICE 2
16:35 - 16:50	SSP+SBK	ТРЕНИРОВКА ЗА ВРЕМЕ 2	15	TIME PRACTICE 2
17:00	SM65+SM85	ДОСТЪПЪТ ДО СТАРТОВАТА РЕШЕТКА Е ОТВОРЕН		ACCESS TO GRID OPENS
17:05	SM65+SM85	ДОСТЪПЪТ ДО СТАРТОВАТА РЕШЕТКА Е ЗАТВОРЕН		ACCESS TO GRID CLOSES
17:07	SM65+SM85	НАЧАЛО НА 1 WARM UP ОБИКолКА		START OF 1 WARM UP LAP
17:10 - 17:25	SM65+SM85	МАНШ 2	8 L	RACE 2
17:30	OPEN + S3	ДОСТЪПЪТ ДО СТАРТОВАТА РЕШЕТКА Е ОТВОРЕН		ACCESS TO GRID OPENS
17:35	OPEN + S3	ДОСТЪПЪТ ДО СТАРТОВАТА РЕШЕТКА Е ЗАТВОРЕН		ACCESS TO GRID CLOSES
17:37	OPEN + S3	НАЧАЛО НА 1 WARM UP ОБИКолКА		START OF 1 WARM UP LAP
17:40 - 18:00	OPEN + S3	МАНШ 2	12 L	RACE 2
18:00	СУПЕРМОТО	НАГРАЖДАВАНЕ SM JUNIOR, S3 & OPEN		PRIZEGIVING SUPERMOTO SM JUNIOR, S3 & OPEN

НЕДЕЛЯ / SUNDAY

08:50 - 09:05	SM65+SM85	WARM UP	15	WARM UP
09:10 - 09:25	OPEN + S3	WARM UP	15	WARM UP
09:35 - 09:50	SP 125	WARM UP	15	WARM UP
09:55 - 10:10	F600	WARM UP	15	WARM UP
10:15 - 10:30	F1000	WARM UP	15	WARM UP
10:35 - 10:50	SSP+SBK	WARM UP	15	WARM UP
11:00	ВСИЧКИ	ОФИЦИАЛНО ОТКРИВАНЕ		OFFICIAL OPENING
11:20	SP125/SSP300	ЗАТВАРЯНЕ НА ПРЕДСТАРТОВАТА ЗОНА		PRESTART ZONE CLOSES
11:30 - 11:50		СТАРТ	8 L	RACE
		НАГРАЖДАВАНЕ		PRIZEGIVING
12:00	SM65+SM85	ДОСТЪПЪТ ДО СТАРТОВАТА РЕШЕТКА Е ОТВОРЕН		ACCESS TO GRID OPENS
12:05	SM65+SM85	ДОСТЪПЪТ ДО СТАРТОВАТА РЕШЕТКА Е ЗАТВОРЕН		ACCESS TO GRID CLOSES
12:07	SM65+SM85	НАЧАЛО НА 1 WARM UP ОБИКОЛКА		START OF 1 WARM UP LAP
12:10 - 12:25	SM65+SM85	МАНШ 1	8L	RACE 1
12:30	OPEN + S3	ДОСТЪПЪТ ДО СТАРТОВАТА РЕШЕТКА Е ОТВОРЕН		ACCESS TO GRID OPENS
12:35	OPEN + S3	ДОСТЪПЪТ ДО СТАРТОВАТА РЕШЕТКА Е ЗАТВОРЕН		ACCESS TO GRID CLOSES
12:37	OPEN + S3	НАЧАЛО НА 1 WARM UP ОБИКОЛКА		START OF 1 WARM UP LAP
12:40 - 13:00	OPEN + S3	МАНШ 1	12L	RACE 1
13:10	F600	ЗАТВАРЯНЕ НА ПРЕДСТАРТОВАТА ЗОНА		PRE START ZONE CLOSES
13:20 - 13:40		СТАРТ	10 L	RACE
		НАГРАЖДАВАНЕ		PRIZEGIVING
13:50	F1000	ЗАТВАРЯНЕ НА ПРЕДСТАРТОВАТА ЗОНА		PRE START ZONE CLOSES
14:00 - 14:20		СТАРТ	10L	RACE
		НАГРАЖДАВАНЕ		PRIZEGIVING
14:30	SSP+SBK	ЗАТВАРЯНЕ НА ПРЕДСТАРТОВАТА ЗОНА		PRE START ZONE CLOSES
14:40 - 15:00		СТАРТ	12 L	RACE
		НАГРАЖДАВАНЕ		PRIZEGIVING
15:10	SM65+SM85	ДОСТЪПЪТ ДО СТАРТОВАТА РЕШЕТКА Е ОТВОРЕН		ACCESS TO GRID OPENS
15:15	SM65+SM85	ДОСТЪПЪТ ДО СТАРТОВАТА РЕШЕТКА Е ЗАТВОРЕН		ACCESS TO GRID CLOSES
15:17	SM65+SM85	НАЧАЛО НА 1 WARM UP ОБИКОЛКА		START OF 1 WARM UP LAP
15:20 - 15:35	SM65+SM85	МАНШ 2	8 L	RACE 2
15:45	OPEN + S3	ДОСТЪПЪТ ДО СТАРТОВАТА РЕШЕТКА Е ОТВОРЕН		ACCESS TO GRID OPENS
15:50	OPEN + S3	ДОСТЪПЪТ ДО СТАРТОВАТА РЕШЕТКА Е ЗАТВОРЕН		ACCESS TO GRID CLOSES
15:57	OPEN + S3	НАЧАЛО НА 1 WARM UP ОБИКОЛКА		START OF 1 WARM UP LAP
16:00 - 16:20	OPEN + S3	МАНШ 2	12 L	RACE 2
16:30	СУПЕРМОТО	НАГРАЖДАВАНЕ SM JUNIOR, S3 & OPEN		PRIZEGIVING SUPERMOTO SM JUNIOR, S3 & OPEN





SUPPLEMENTARY REGULATIONS

BMU European SuperMoto Championship 2020

Round: **4 and 5 (BCSM04 and BCSM05 – final round)**

Date: **12-13.09.2020**

Venue: **SuperMoto circuit Dolna Mitropolia**

City: **Pleven**

Country: **Bulgaria**

1. ORGANIZERS

FMN: **BMF**

Club: **MSC Pleven**

2. CLASSES

SM65 SM85 S3 OPEN (Senior)

3. ACCESS

See attached map

Nearest city: **Pleven**

GPS coordinates of the circuit: **43°27'33.30"N , 24°31'59.96"E**

4. CIRCUIT INFORMATION

Name: **SuperMoto circuit Dolna Mitropolia**

Total length: **1 600 m.**

Width: **minimum 7m.**

Homologation: **BMF**

5. NEAREST HOSPITAL

Name: **MBAL Georg Spartanski**

Approximate distance from venue: **12 km.**



6. OFFICIALS

BMU Steward:	Bogdan Nikolov
Race Director:	Panteley Naydev
Chief Technical Steward:	Georgi Peev
Administrative control:	Ivo Tsvetanov
Paddock Official:	Rumen Nikolov
Timekeeper:	Deyan Tsvetkov
CMO:	TBA
Chief Flag marshal:	Rumen Markovski

7. MEETINGS OF THE RACE DIRECTION

As per time table

Venue: Race Direction Office

8. ADMINISTRATIVE AND TECHNICAL CONTROL

According to timetable

9. INSURANCE, ENTRIES AND STARTING PERMISSIONS

All riders must be authorized by their national federation (FMN) in order to participate in the event(s) via starting permission plus license confirmation (to be presented at the administrative control).

All entries must be sent minimum 2 days before the beginning of the Administrative control.

All riders will be required to sign additional documents at the Administrative control.

Riders under the age of 18 (minors) must be accompanied by a legal representative (parent or guardian) at the technical and Administrative control.

By signing and stamping the Starting permission for a rider, their FMN declares that the rider in question:

- has a valid insurance for motorcycling sports according to FIM Europe requirements,
- has no bans or prohibitions that prevent them to participate in the event,
- is physically and mentally fit to participate in the event,
- has the sporting skills of the required level in order to participate in the event without endangering him or other participants during the event

The organizers disclaim all responsibility for damage to a motorcycle, its accessories and components arising out of an accident, fire or other cases.

The organizers have contracted a third party insurance according the BMU regulations for the days of the event (Friday, Saturday and Sunday) for the amount of 200 000 euro.

All Starting permissions must be sent to

Ivo Tsvetanov

Email: ivotsv@gmail.com, mobile: +359 886 411 400



10. ENTRY FEE

25 euro SM 65, SM85 / 50 euro S3, OPEN, Senior

11. FREE PRACTICES, TIME PRACTICES AND RACES

Free practices, Time Practices and Races will be run according to the timetable enclosed.

12. RENUNCIATION OF ANY RECOURSE AGAINST SPORTING AUTHORITIES

Riders renounce all rights of appeal against the organizer, his representatives or agents by arbitration or before a tribunal or any other manner not foreseen by the BMU Regulations or the FIM Europe Sporting Code where applicable, for any damages for which they could be liable in consequence of all acts or omissions on the part of the organizer, his officials, representatives or agents in the application of these regulations or contributed to or arising out of their actions.

SPECIFIC AND ADDITIONAL REGULATIONS FOR THE EVENT:

1. Paddock opens Friday at 12:00
2. ALL RIDERS MUST BE IN POSSESSION OF THEIR INTERNATIONAL INSURANCE FOR MOTORSPORT
3. THE EVENT IS ALSO FIM EUROPE SMJ, S3 AND SENIOR EVENT, SO ALL RIDERS IN THESE CLASSES MUST BE IN POSSESSION OF THE RELEVANT FIM EUROPE LICENSE

Place and date: Sofia, 04.09.2020

Approved by Organizers: BMF/MSC Pleven

Approved by Race Director: P. Naydev

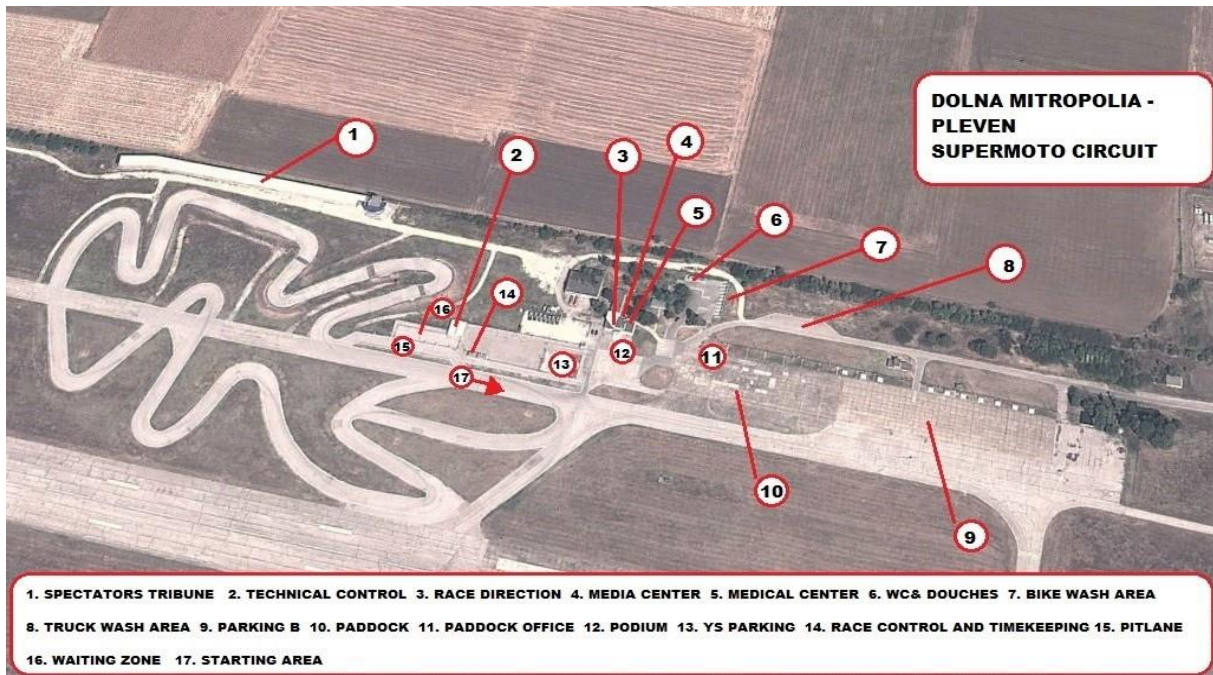
Approved by BMU:



Enclosed:

Map of the circuit
Access Map

CIRCUIT LAYOUT / CIRCUIT FACILITIES



ACCESS MAPS TO CIRCUIT

